



# Agilent Technologies

## **SP50 3.1.6 Patch Installation Guide**

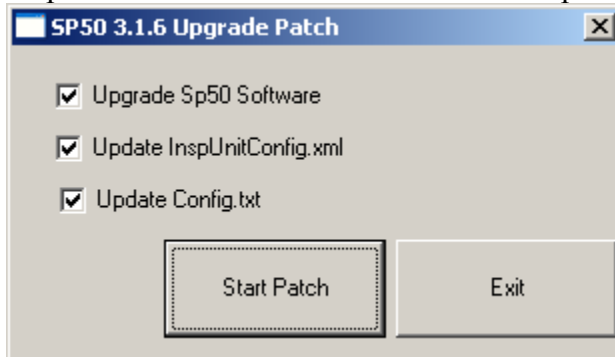
Step 1: Backup c:\cpi and c:\Program Files\Agilent Technologies\SP Series folder to a save place.

Step 2: Make sure below files are copy in same folder.

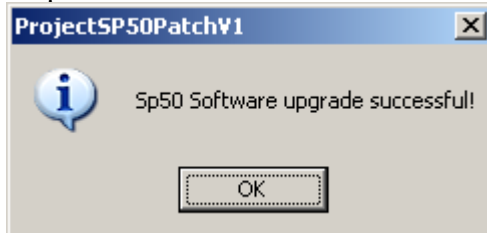
- spGUI.exe
- AOIengine.exe
- SP50\_316PatchV2.exe.
- Install\_SP50\_316.bat
- COM\_Register.reg

Step 3: Run Install\_SP50\_316.bat.

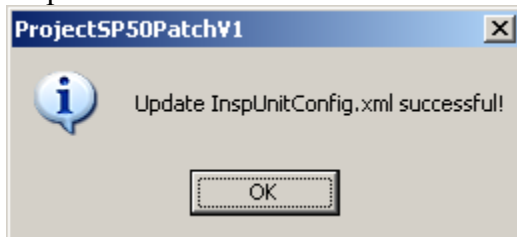
Step 4: Click Start Patch button to start the patch.



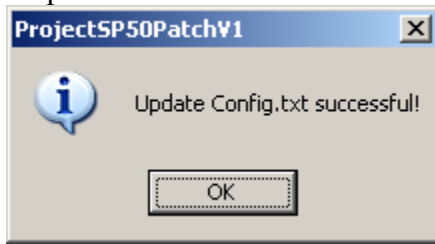
Step 5: Press Ok button to continue.



Step 6: Press Ok button to continue.

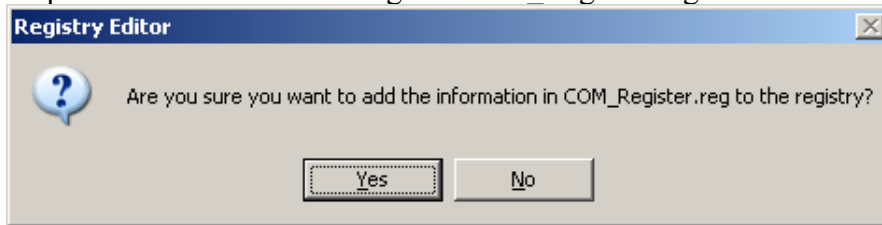


Step 7: Press Ok button to continue.

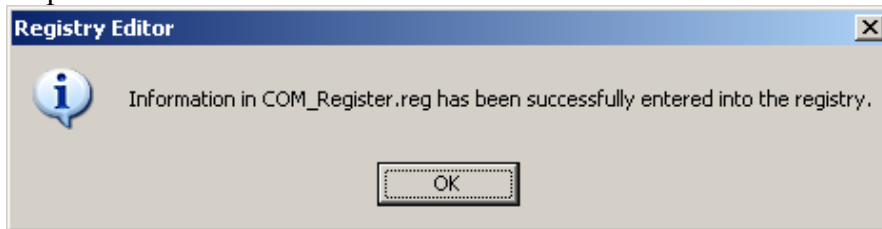


Step 8: Press Exit to quit software.

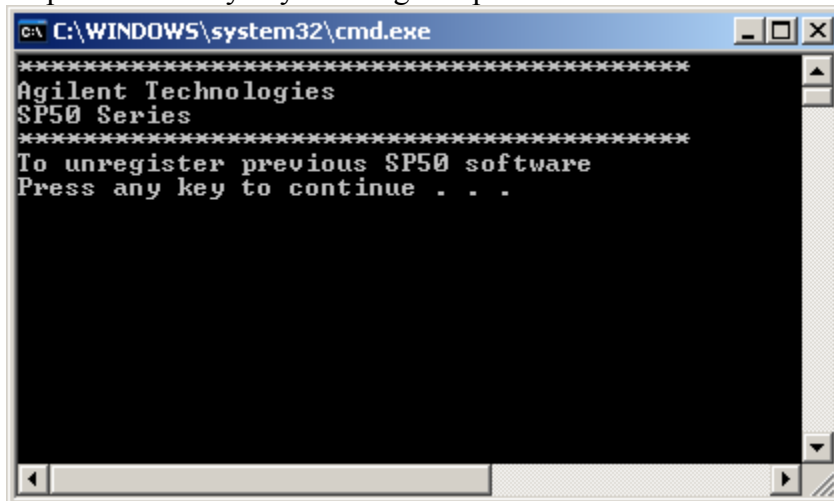
Step 9: Click Yes button to register Com\_Register.reg



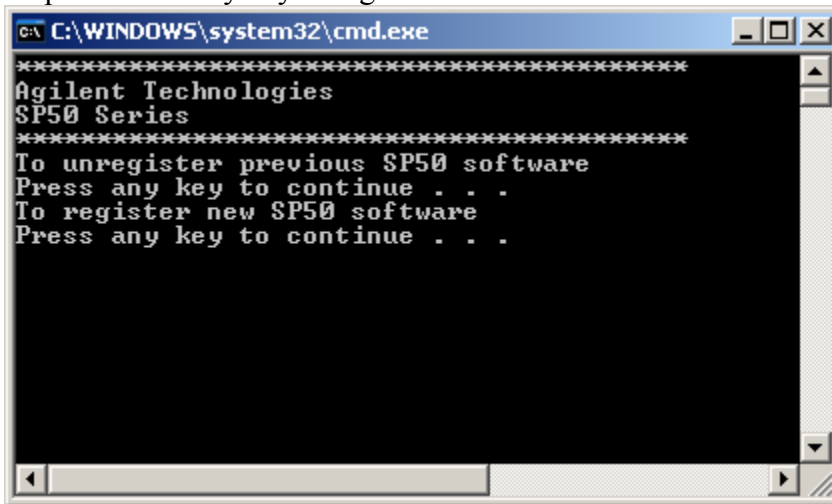
Step 10: Click Ok button.



Step 11: Press any key to unregister previous SP50 software.

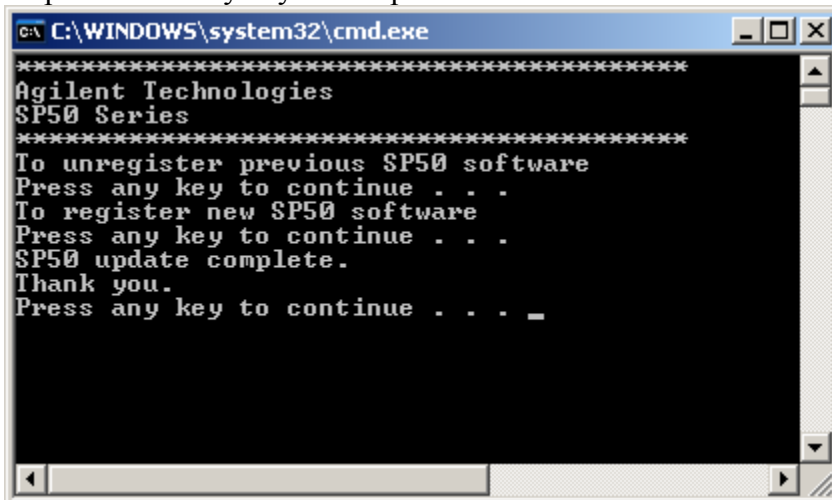


Step 12: Press any key to register new SP50 software.



```
C:\WINDOWS\system32\cmd.exe
*****
Agilent Technologies
SP50 Series
*****
To unregister previous SP50 software
Press any key to continue . . .
To register new SP50 software
Press any key to continue . . .
```

Step 13: Press any key to exit patch.



```
C:\WINDOWS\system32\cmd.exe
*****
Agilent Technologies
SP50 Series
*****
To unregister previous SP50 software
Press any key to continue . . .
To register new SP50 software
Press any key to continue . . .
SP50 update complete.
Thank you.
Press any key to continue . . . _
```